

Path to Enlightenment Quiz: Point of View



POINT OF VIEW

How you see something, as in “Well,
that is one point of view on the
movie, but I think.....”

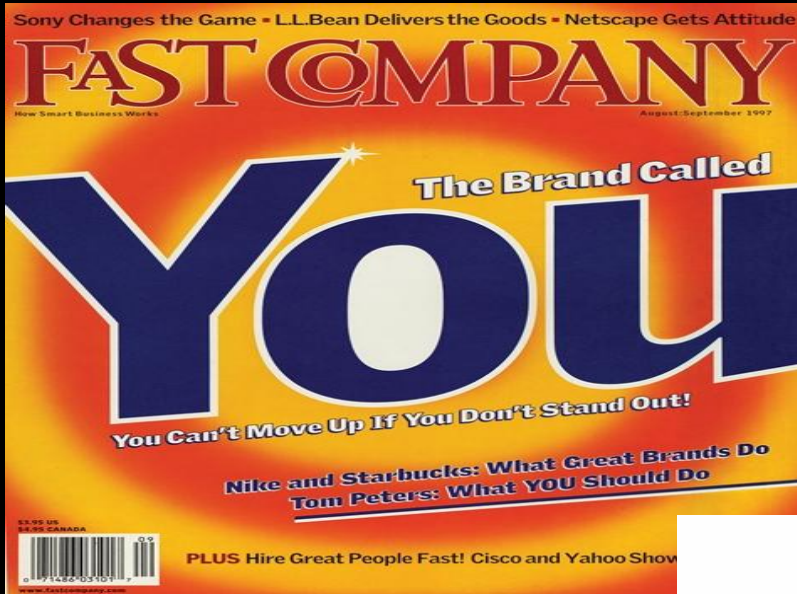
FIRST PERSON



- Uses I, me, my, mine,
- Based on what one character in the story sees, hears, feels, etc.
- Limited to one set of eyes that talks in the voice of the narrator

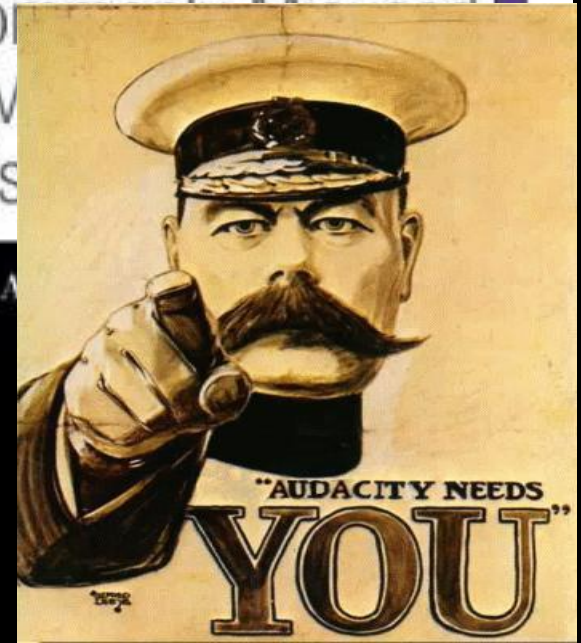


SECOND PERSON- uses YOU



WORDS YOU
THOUGHT
YOU KNEW...

Talks directly to the reader,
using YOU. Used to be
bring the reader into the
text directly. **NARRATOR**
SPEAKS TO YOU
DIRECTLY



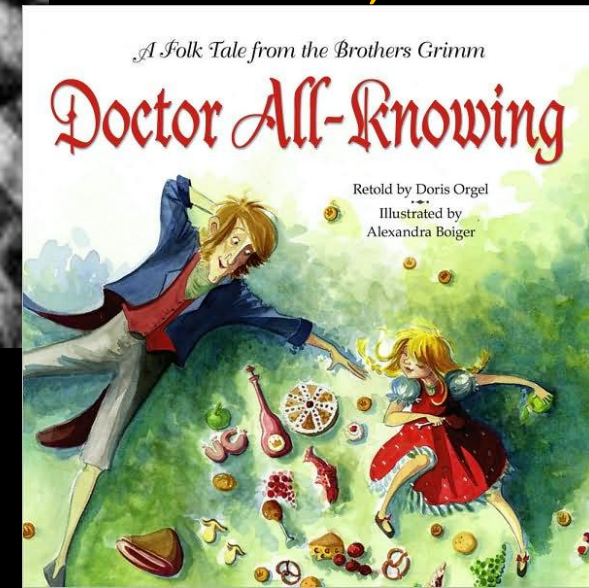
third person - omniscient



The perspective that sees into everyone's head. The Narrator knows what everyone in the scene is thinking and shares it.



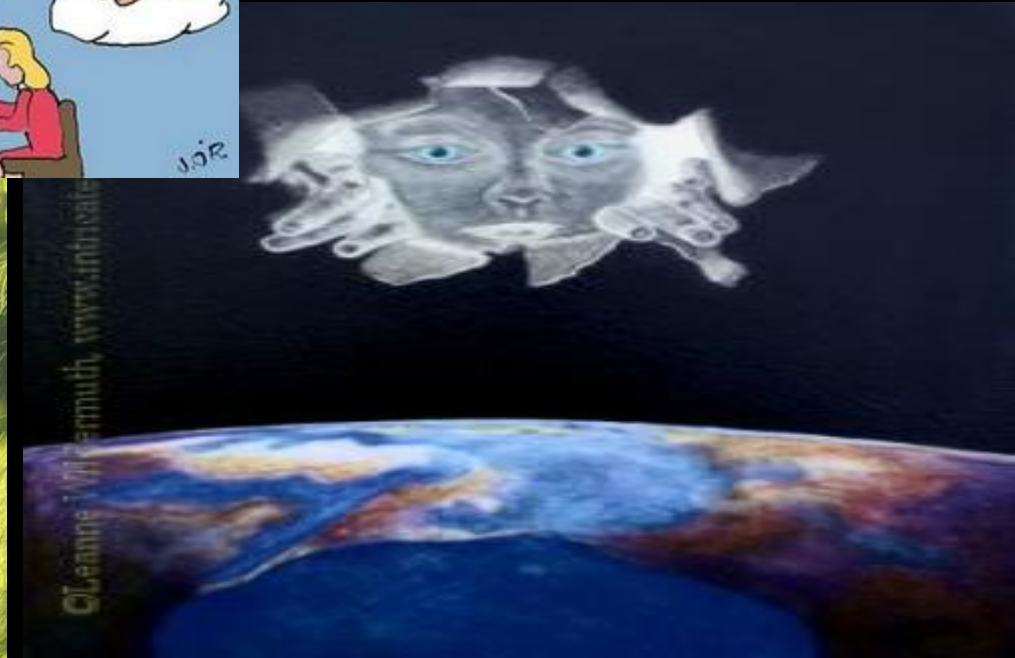
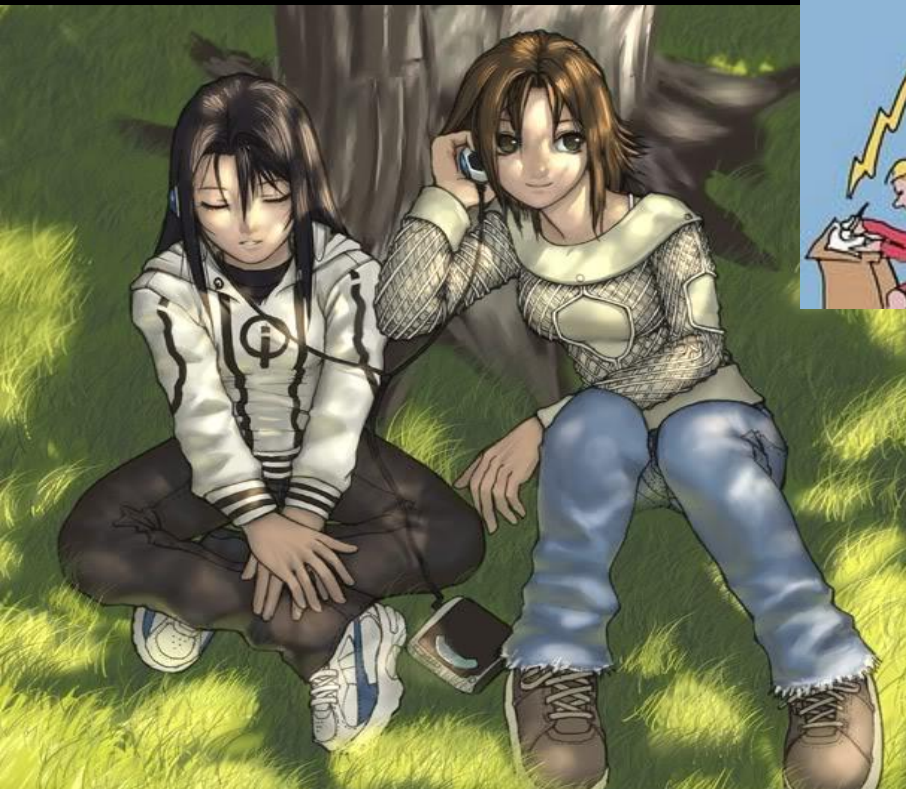
Uses HE, SHE, THEY, PEOPLE'S NAMES, ETC.



The GOD or ALL KNOWING perspective. From the present and the past, all the thoughts from every character. Sees everything.

THIRD PERSON - LIMITED

Still narrating with the ability to know what characters are thinking, but only a small number of people (maybe one), not everyone in a story.



Does the narrator interact with other characters?

No

Yes

Does the narrator reveal the thoughts and feelings of many characters?

First Person

Yes

No

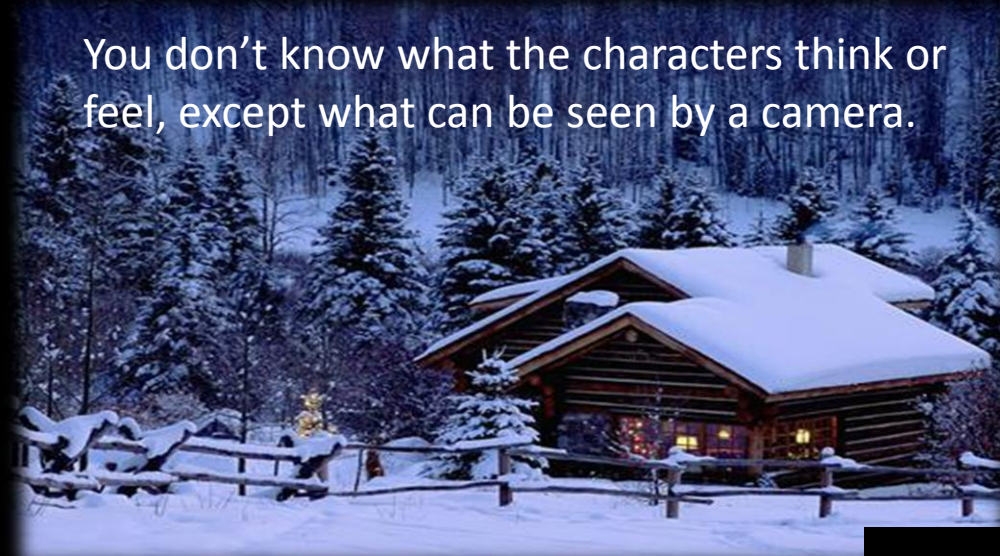
**Third Person
Omniscient**

**Third Person
Limited**

**grand
theft
auto IV**

CAMERA VIEW

You don't know what the characters think or feel, except what can be seen by a camera.



The impartial eye of the camera. Not influenced by the thoughts or emotions, except what can be seen. LIKE TV!

